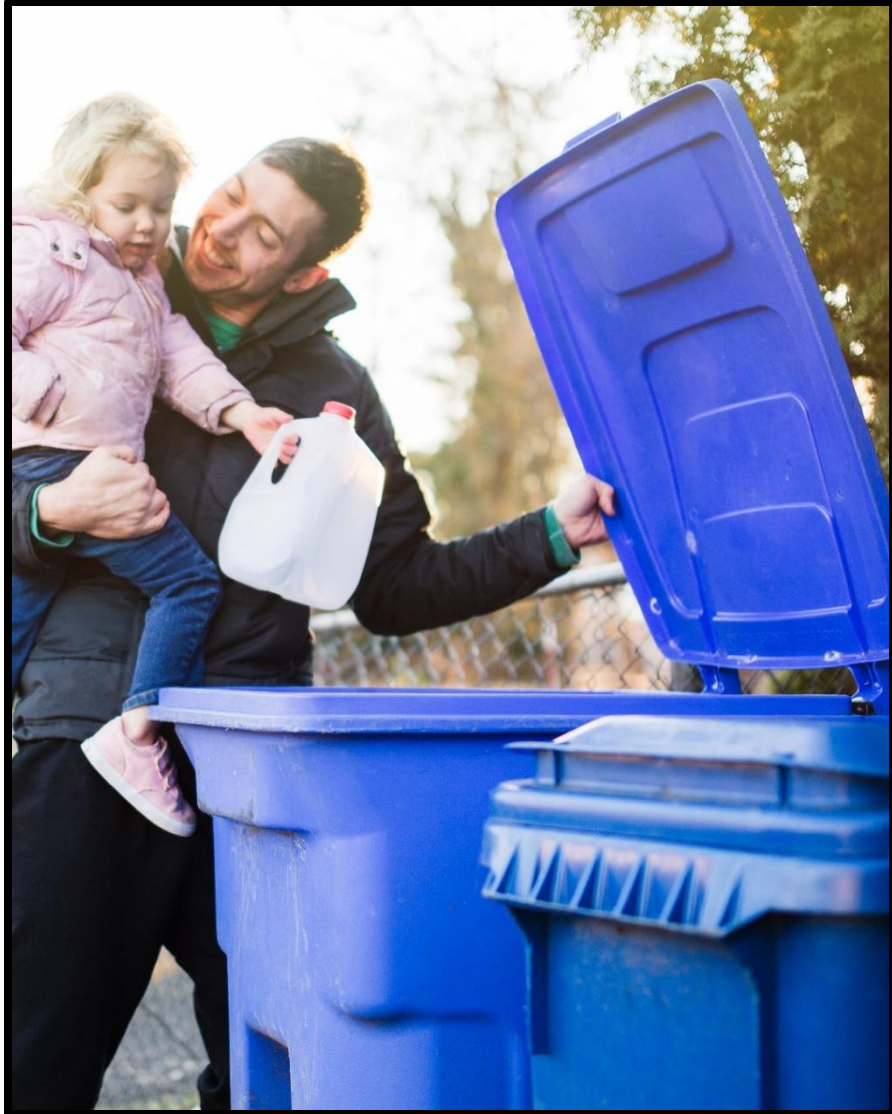


# LESS WASTE STARTS NOW



A NEW WAY TO CURB IT



# OVERVIEW

- Why We're Here
- New Hefty® EnergyBag™ Program
- What Goes In, What Stays Out





# GLOBAL RECYCLING MARKETS

Severe restrictions limited our ability to recycle



# GLOBAL RECYCLING MARKETS

- Recyclables are a commodity
- Where do most of our recyclables go?



# WHAT STARTED ALL THE CHANGES?

- Strict new limits from China
- Banned some plastics
- Very difficult restrictions on others (0.5%)
- Current prices/markets unsustainable
- Limit on domestic markets
- Impacted cities across the world

# WHAT THIS HAS MEANT FOR BOISE

- Quickly reevaluate how/what we recycle
- Make a choice- Landfill or something new
- Better quality material = more markets + improved value
- Focus on contamination

# BROADER FUTURE VISION

- Local/regional management
- Innovative solutions
- More out of the landfill
- Renewed focus on reduce/reuse







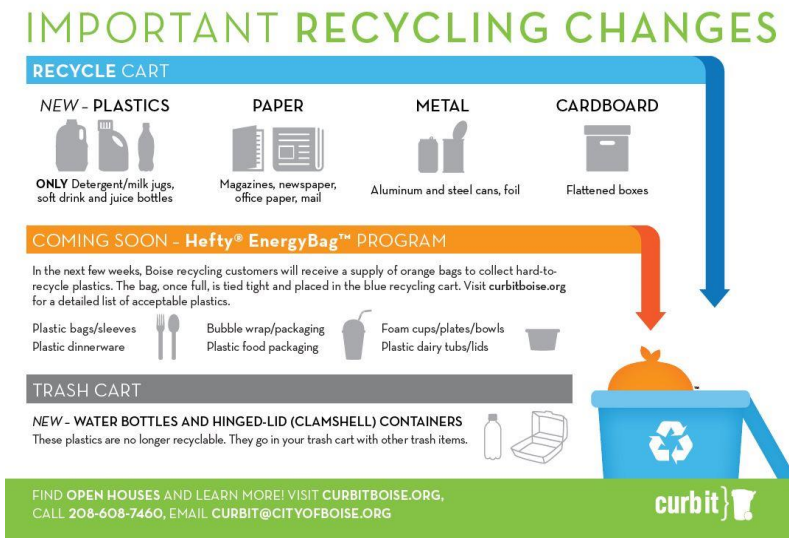
# HEFTY<sup>®</sup> ENERGYBAG<sup>™</sup> PROGRAM

New program will complement curbside recycling



# ABOUT THE PROGRAM

- Accepts more than before
- Taken from Boise homes to Salt Lake City
- Broken down and converted into diesel fuel
- Extremely clean process



# AT YOUR HOME

- Delivered in the next few weeks
- Reference Guide included
- Begin using right away
- Tie tight, put in blue cart
- Picked up with recyclables



# HELPFUL TIPS

- When it doubt- keep it out
- Look for easy ways to reduce
- Worst offenders in blue cart
  - **Plastic Bags**
  - **Glass**





# WHAT GOES IN, WHAT STAYS OUT

Put the right things into the recycle cart and keep the wrong thing out

# CHANGES- ALL ABOUT PLASTICS

- Very limited plastics allowed in blue cart
- Plastic water bottles and hinged-lid (clamshell) containers must go into the trash cart.
- Most other plastics can go into the orange bag
- No changes to paper/cardboard/metal

## HOME REFERENCE GUIDE

## RECYCLE CART

## PLASTICS - NEW



ONLY Detergent/milk jugs,  
soft drink & juice bottles

## PAPER



Magazines, newspaper,  
office paper, mail

## METAL



Aluminum and steel cans, foil

## CARDBOARD



Flattened boxes



## NEW Hefty® EnergyBag™ PROGRAM

ONLY specific plastics go in the orange bag. No paper, metal or cardboard.

## KITCHEN

## ALL PLASTIC BAGS

- Grocery bags
- Bread bags
- Chip/snack bags
- Fruit/vegetable/salad bags
- Plastic pet food/treat bags

## PLASTIC FOOD PACKAGING

- Plastic food wrap
- Meat/cheese packaging
- Candy wrappers
- Food storage bags
- Plastic bottle caps

## PLASTIC DAIRY TUBS/LIDS

- Yogurt/butter/sourcream

## PLASTIC POUCHES

- Juice/squeezable

## PLASTIC SINGLE SERVE

- Snacks - pudding

## PLASTIC DINNERWARE

- Straws/utensils/cups/plates/etc.

## FOAM PRODUCTS

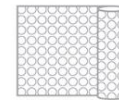
- Foam egg cartons
- Foam cups/plates/bowls
- Foam meat trays



## HOME/OFFICE

## PLASTIC PACKING/SHIPPING

- Bubble wrap
- Air packs/pillows
- Shrink wrap
- Plastic envelopes



## BATHROOM

## TOOTHPASTE TUBES

## EMPTY DEODORANT STICKS

## PLASTIC TUBES

- Lotion/creams



## WHAT DO I DO WITH THE ORANGE BAG?

FILL BAG WITH **EMPTY,  
CLEAN AND DRY** ITEMS



**TIE THE BAG  
SECURELY**



**PLACE IN YOUR  
RECYCLING CART**



## TRASH CART

These **must** go in your trash cart  
with other trash items.

## WATER BOTTLES



ALL plastic water bottles

HINGED LID  
(CLAMSHELL)  
CONTAINERS

To-go salad/sandwich, fruit/  
vegetable hinged containers

## ALL WAX-COATED



To-go cups, frozen dinners,  
dairy, juice cartons



curbit

QUESTIONS? CALL - 208-608-7460

EMAIL - CURBIT@CITYOFBOISE.ORG

WEBSITE - CURBITBOISE.ORG





**Questions?**

# RECYCLING CHALLENGES

- No market for lightweight plastics
- Contamination impacts for paper

Material	Amount
Mixed Paper	50%
Cardboard	29%
Plastics (#1-7)	8%
Metals	3%
Trash	10%

# LESS WASTE STARTS NOW

## A NEW WAY TO CURBIT



Every day, the City of Boise works hard to ensure our community is safe, clean and vibrant. We're committed to searching for innovative and sustainable ways to manage waste and keep rates among the lowest in the region.

Late last year, Boise was faced with the challenge of rethinking waste management when global recycling markets placed severe restrictions on recyclable material. Through our commitment to sustainability, we found a local solution, one that creates meaningful change in the way we think about waste.

With every new challenge comes new opportunities and the City of Boise is excited to launch a complement to our curbside recycling program.

### ANNOUNCING THE Hefty® EnergyBag™ PROGRAM

#### BENEFITS

**KEEP PLASTICS OUT OF THE LANDFILL** - Collect more types of plastics that will now be beneficially reused.

**PLASTICS ARE MANAGED REGIONALLY** - Rather than being shipped across the world, plastics are converted into synthetic diesel fuel in Salt Lake City.

#### HOW THE NEW PROGRAM WORKS

Each customer will receive a supply of orange bags to collect hard-to-recycle plastics. The bag, once full, is tied tight and placed in the blue recycling cart.

**FILL BAG WITH EMPTY,  
CLEAN AND DRY ITEMS**



**TIE THE BAG  
SECURELY**



**PLACE IN YOUR  
RECYCLING CART**



### UPDATES TO PLASTIC RECYCLING

With new changes to Boise's recycling program, it is vital to put the right plastics in the recycle cart and keep the wrong plastics out. Please note the following:

#### RECYCLE - NEW



**ONLY** detergent bottles, milk jugs, soft drink and juice bottles can be RECYCLED.

#### TRASH - NEW



**ALL** plastic water bottles and plastic hinged-lid (clamshell) containers must be thrown in the TRASH.

FIND OUT  
MORE

### OPEN HOUSE DATES

Learn more and ask questions.

**TUESDAY, MAY 8, 6-7:30 pm**

Library! at Cole and Ustick

**THURSDAY, MAY 10, 6-7:30 pm**

Library! at Hillcrest

**SATURDAY, MAY 12, 1-3 pm**

Library! at Bown Crossing

**SATURDAY, MAY 19, 1-3 pm**

Library! at Collister

### VISIT CURBITBOISE.ORG

- FAQs
- Helpful videos
- Detailed program information
- Open House dates
- And much more!

### CONTACT US

CURBITBOISE.ORG

208-608-7460

CURBIT@CITYOFBOISE.ORG

VIEW GUIDE



# HOME REFERENCE GUIDE

## RECYCLE CART

Continue putting these items **loose** in your cart.

### PLASTICS - NEW



**ONLY** Detergent/milk jugs, soft drink and juice bottles

### PAPER



Magazines, newspaper, office paper, mail

### METAL



Aluminum and steel cans, foil

### CARDBOARD



Flattened boxes



## NEW Hefty® EnergyBag™ PROGRAM

**ONLY specific plastics** go in the orange bag. **No** paper, metal or cardboard.

### KITCHEN

#### ALL PLASTIC BAGS

- Bread bags
- Chip/snack bags
- Fruit/vegetable/salad bags
- Plastic pet food/treat bags
- Grocery bags

#### PLASTIC FOOD PACKAGING

- Plastic food wrap
- Meat/cheese packaging
- Candy wrappers
- Food storage bags
- Plastic bottle caps

#### PLASTIC DAIRY TUBS/LIDS

- Yogurt/butter/sour cream

#### PLASTIC POUCHES

- Juice/squeezable

#### PLASTIC SINGLE SERVE

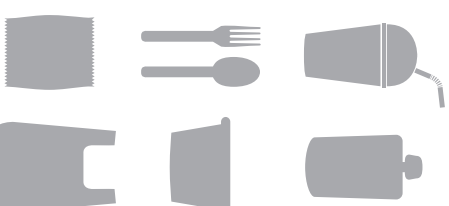
- Snacks - pudding

#### PLASTIC DINNERWARE

- Straws/utensils/cups/plates/etc.

#### FOAM PRODUCTS

- Foam egg cartons
- Foam cups/plates/bowls
- Foam meat trays

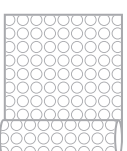


### HOME/OFFICE

#### PLASTIC PACKING/SHIPPING

- Bubble wrap
- Air packs/pillows

- Shrink wrap
- Plastic envelopes



### BATHROOM

#### TOOTHPASTE TUBES

#### EMPTY DEODORANT STICKS

#### PLASTIC TUBES

- Lotion/creams



## WHAT DO I DO WITH THE ORANGE BAG?

FILL BAG WITH **EMPTY**,  
**CLEAN AND DRY** ITEMS



**TIE** THE BAG  
**SECURELY**



**PLACE** IN YOUR  
**RECYCLING CART**



## TRASH CART

These **must** go in your trash cart with other trash items.

### WATER BOTTLES



**ALL** plastic water bottles

### HINGED LID (CLAMSHELL) CONTAINERS



**ALL** plastic to-go, fruit/vegetable hinged containers

### ALL WAX-COATED



To-go cups, frozen dinners, dairy, juice cartons

